

National Assembly

Question Number: 2610

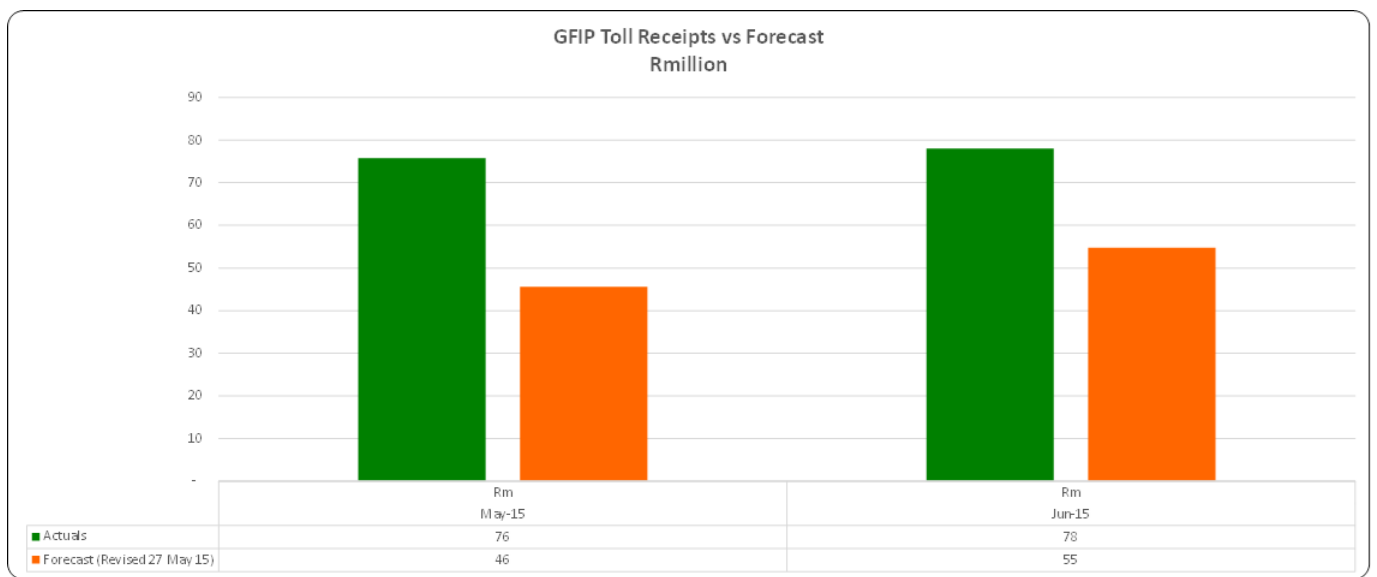
Mr K S Mubu (DA) to ask the Minister of Transport:

(a) To what extent have the payments of e-tolls increased since the implementation of the new dispensation announced by the Deputy President, Mr Cyril Ramaphosa, and (b) how do these payments compare to the payments of the 12-month period prior to the announcement of the dispensation?

NW2985E

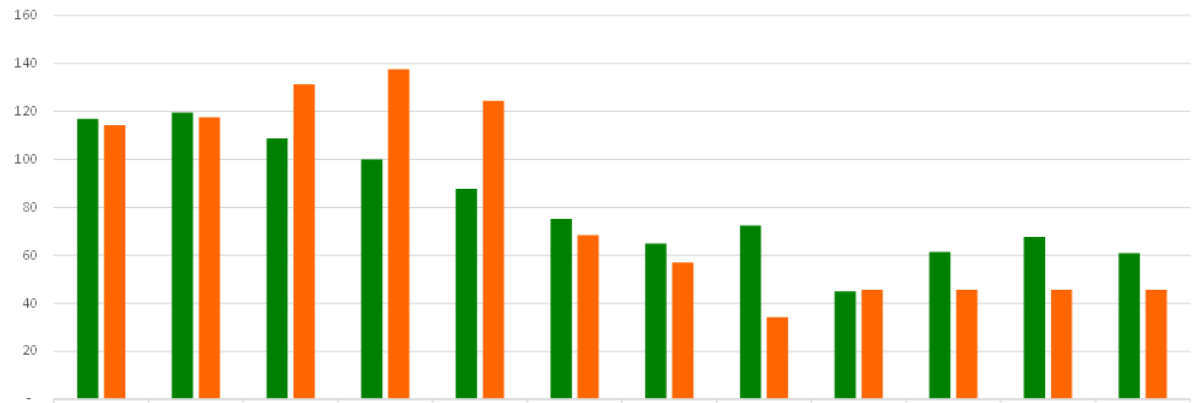
Answer

(a) The graph below depicts the monthly cash receipts since the announcement of the new dispensation.



(b) The graph below depicts the monthly cash flow comparison for the 12 months prior to the announcement of the new dispensation.

GFIP Toll Receipts vs Forecast Rmillion



	Rm May-14	Rm Jun-14	Rm Jul-14	Rm Aug-14	Rm Sep-14	Rm Oct-14	Rm Nov-14	Rm Dec-14	Rm Jan-15	Rm Feb-15	Rm Mar-15	Rm Apr-15
■ Actuals	117	120	109	100	88	75	65	72	45	61	68	61
■ Forecast (Revised 27 May 15)	114	118	131	137	124	68	57	34	46	46	46	46