

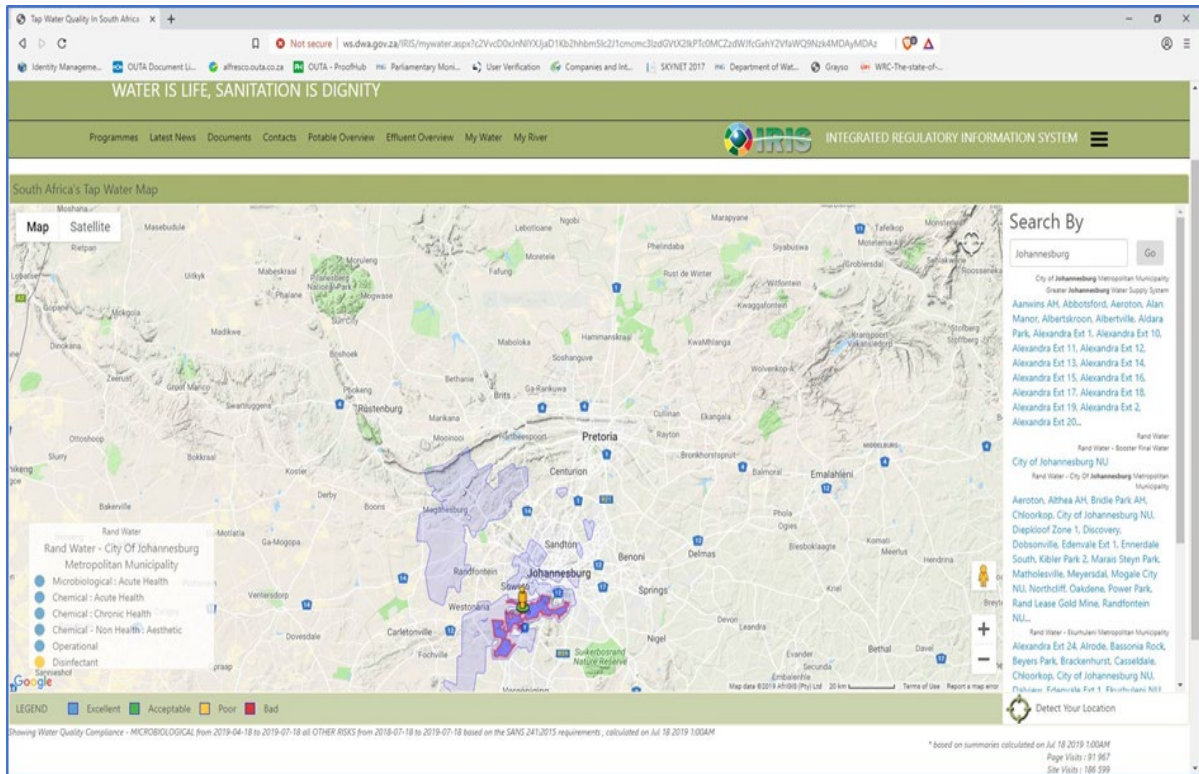
SELF HELP GUIDE (MY WATER)

Please follow these easy steps:

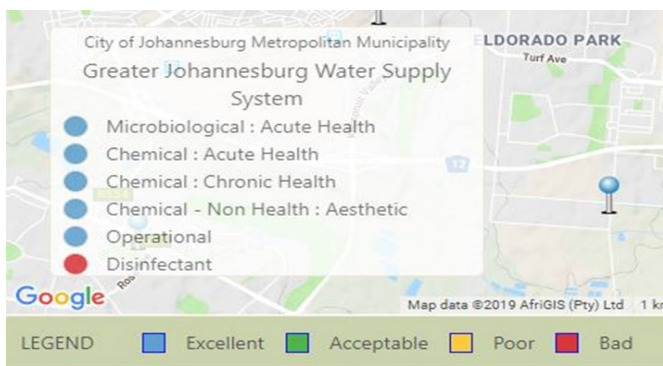
1. Access the IRIS Tap Water Quality page by clicking [here](#).
2. **Circled in red** is the “Search By” window. Enter the name of your Municipality or the name of your town/City or superb of your choice, for example “Johannesburg” and press enter or click on “Go”.
3. Now, select the appropriate area, **circled in blue**, that you would like to view (The map will automatically display the area).

The screenshot displays the 'water & sanitation' website for the Department of Water and Sanitation, Republic of South Africa. The page features a navigation bar with 'Programmes', 'Latest News', 'Documents', 'Contacts', 'Potable Overview', 'Effluent Overview', 'My Water', and 'My River'. Below this is the 'IRIS INTEGRATED REGULATORY INFORMATION SYSTEM' logo. The main content area is titled 'South Africa's Tap Water Map' and shows a map of South Africa with various municipalities labeled. A search overlay is visible on the right side of the map, titled 'Search By'. The search input field contains 'Johannesburg' and a 'Go' button. A list of search results is displayed below the search bar, including 'City of Johannesburg Metropolitan Municipality', 'Greater Johannesburg Water Supply System', and various suburbs like 'Aanwina AH', 'Abbotsford', 'Aeroton', 'Alan Manor', 'Albertskroon', 'Albertville', 'Aldara Park', 'Alexandra Ext 1', 'Alexandra Ext 10', 'Alexandra Ext 11', 'Alexandra Ext 12', 'Alexandra Ext 13', 'Alexandra Ext 14', 'Alexandra Ext 15', 'Alexandra Ext 16', 'Alexandra Ext 17', 'Alexandra Ext 18', 'Alexandra Ext 19', 'Alexandra Ext 2', 'Alexandra Ext 20...', 'Rand Water', 'Rand Water - Booste Park Water', 'City of Johannesburg NU', 'Rand Water - City of Johannesburg Metropolitan Municipality', 'Aeroton, Athlea AH, Bridle Park AH, Choochoop, City of Johannesburg NU, Diepkloof Zone 1, Discovery, Dobsonville, Edenvale Ext 1, Emmerdale South, Kibler Park 2, Marais Steyn Park, Matholeville, Meyersdal, Moggale City NU, Northcliff, Oakdene, Power Park, Rand Lease Gold Mine, Randfontein'. The search bar and the search results list are circled in red and blue respectively.

- The area you have marked will now be highlighted and displayed on the map. At the bottom of the page on your left the quality of the drinking water will be displayed and interpreted.



The Legend explains the different colour coding in the water box that is displayed at the bottom. This is the summary for water compliance and the standard against which compliance is measured.



Showing Water Quality Compliance - MICROBIOLOGICAL from 2019-04-19 to 2019-07-18 based on the SANS 241:2015 requirements, calculated on Jul 19 2019 1:00AM

At the bottom of the page a summary will appear indicating the period for which this water quality compliance is displayed as well as the Standard against which compliance is measured.

The displayed compliance information box contains the Name of the Sample Site selected, the Micro compliance status as well as the Supply System name supplying water to this sample site. You can view the Drinking Water Quality Compliance of the Supply System by clicking on the name of the supply system.

	Excellent	Acceptable	Poor	Bad
Microbiological: Acute Health			Health Risk	Health Risk
Chemical: Acute Health			Health Risk	Health Risk
Chemical: Chronic Health			Health Risk	Health Risk
Chemical – Non Health: Aesthetic			Tastes or looks bad	Tastes or looks bad
Operational				
Disinfectant			Not disinfecting bacteria properly	Not disinfecting bacteria properly